

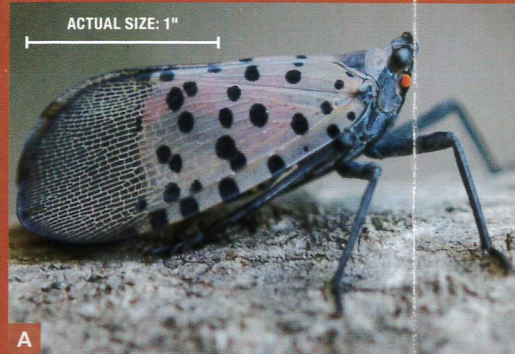
Know What to Look For

Spotted lanternfly adults are about 1 inch long and a half inch wide with wings folded.

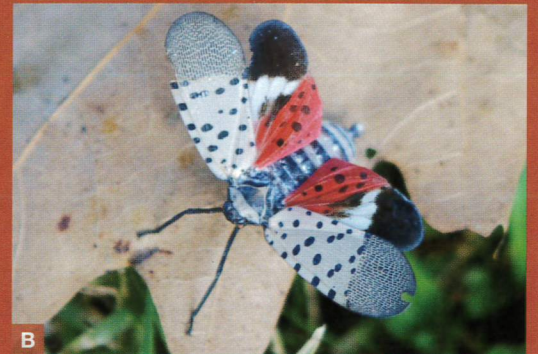
Nymphs are $\frac{1}{4}$ to $\frac{1}{2}$ inch long and develop through four stages, all of which are wingless.

Egg masses have a gray, mud-like covering, which can become dry and cracked over time. Older egg masses may lose their covering and appear as columns of 30–50 seed-like eggs. Egg masses can be found on trees, rocks, and other hard surfaces.

A. Adult, wings closed



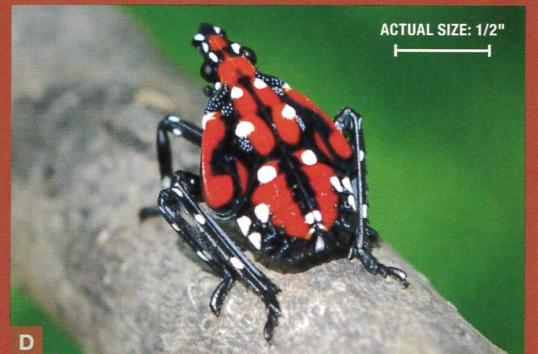
B. Adult, wings open



C. Nymph, early stage



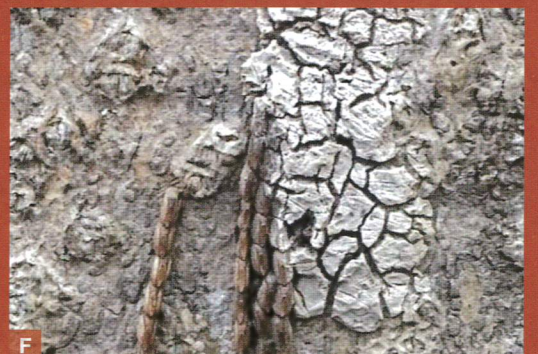
D. Nymph, late stage



E. Egg mass, fresh



F. Egg mass, older



Learn more at: extension.psu.edu/spotted-lanternfly