



MS4 Program Updates

Gilmore and Associates, Inc.

Amanda Fuller, P.E., Township Engineer

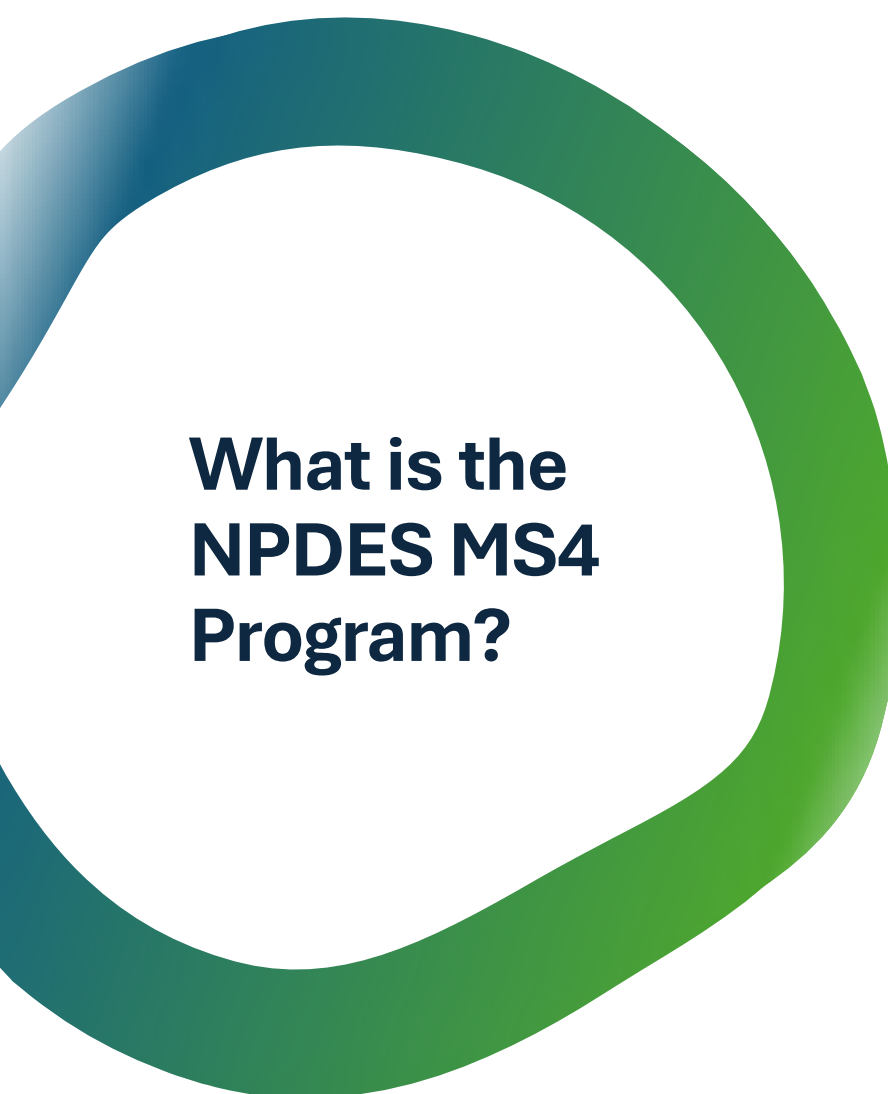
What is the NPDES MS4 Program?

- National Pollutant Discharge Elimination System

Municipal Separate Storm Sewer System

- Federally Mandated Permit Program (enforced by EPA)
- DEP administers the Program in Pennsylvania
- Ultimate goal for this Program
 - Recognize and increase awareness of stormwater as a point-source pollutant
 - Manage stormwater as you would any other point-source pollutant (like sewage)



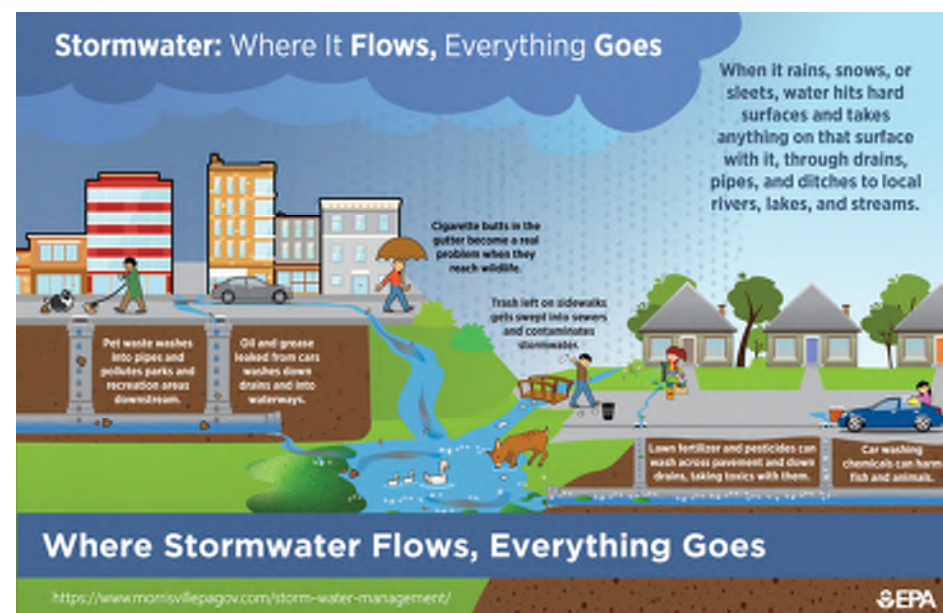


What is the NPDES MS4 Program?

- Implement Best Management Pactices (**BMPs**) under Six (6) Minimum Control Measures (**MCMs**)
 1. Public Education & Outreach
 2. Public Involvement & Participation
 3. Illicit Discharge Detection & Elimination
 4. Construction Site Stormwater Runoff Control
 5. Post Construction Stormwater Management for Development & Redevelopment
 6. Pollution Prevention/ Good Housekeeping

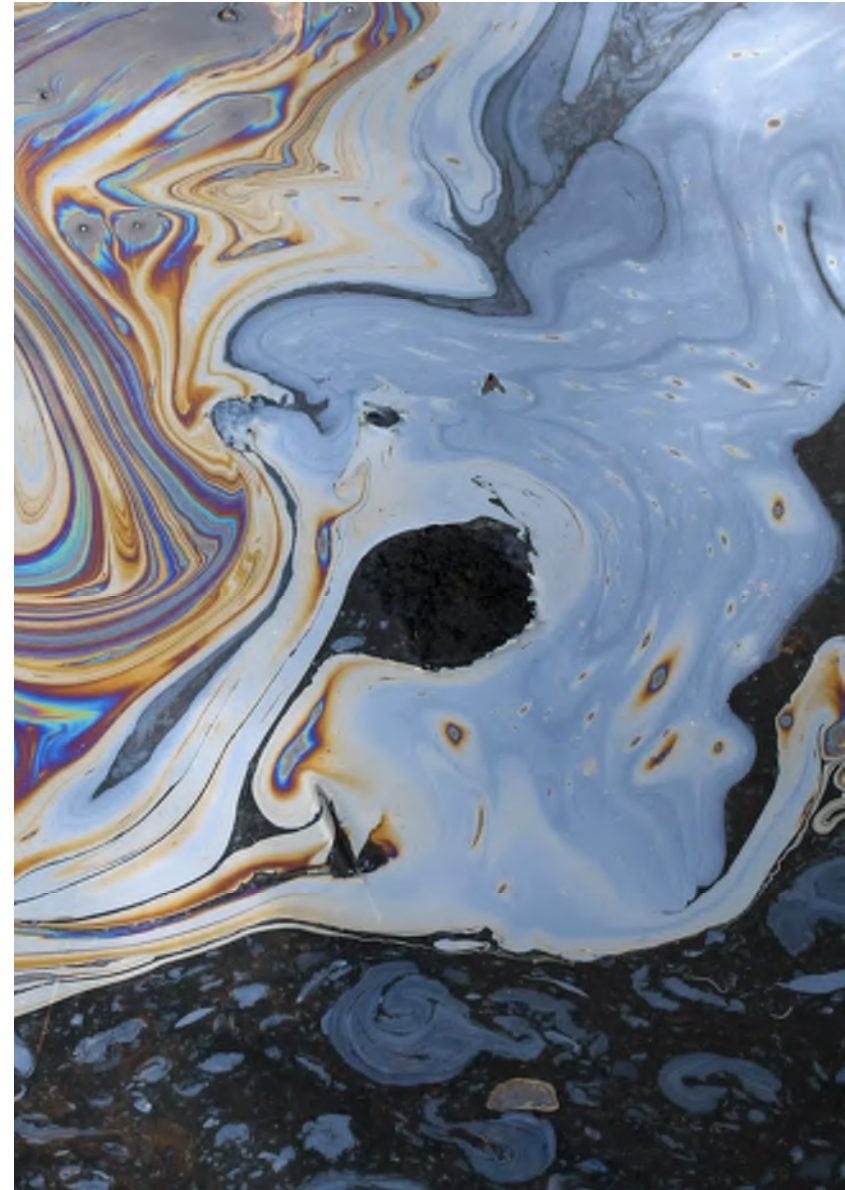
What can residents do to help keep the waterways clean?

- Car Care
 - Use water friendly soaps when washing your car
 - Prevent the water from reaching the stormwater drain
 - Check for leaks frequently and Clean up any spills
- Yard Care
 - Clean up after pets
 - Consider planting a rain garden and/or more trees
 - If you fertilize – use sparingly and follow directions
 - Rake leaves and grass clippings away from stormwater drains
 - Mow high (leave grass blades 3 inches tall)
- Snow
 - Pile your snow where it is most likely to soak into the ground not into a stormwater drain
- Miscellaneous
 - Properly dispose of hazardous substances
 - Report discharges from stormwater outfalls
 - Store materials that could pollute stormwater indoors
 - Pick up any trash on sidewalks to keep it from entering the stormwater drains



Signs of Pollution

- Discolored or muddy water
 - Brown, green, or other unusual colors
- Sheen, film or foam
- Odor
 - Strong, acrid
 - Smells of sewage, chemicals or petroleum
 - Fumes
- Garbage, debris
- Dead fish
- Algal blooms
 - Green water
 - Excessive aquatic plant growth



What is a Pollutant Reduction Plan?

Reduce the sediment load by 10% to **Jericho Creek** over the 5-year permit term.

- Rain Gardens
- Basin Retrofits
- Stream Restoration
- Riparian Buffer Enhancement
- New Stormwater Management Facilities



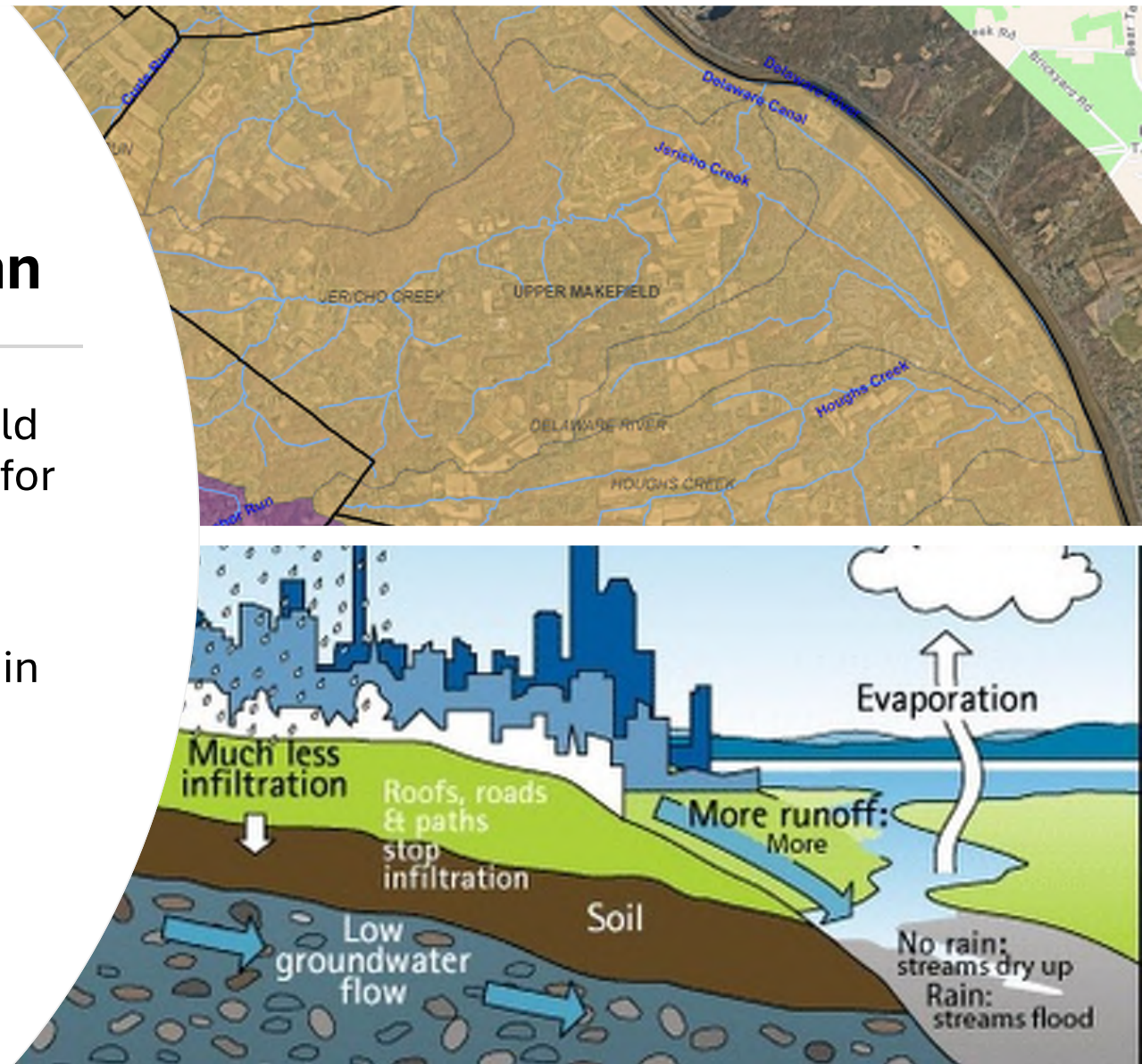
Pollutant Reduction Plan Process

1. Map Stormwater Infrastructure (GIS)
2. Delineate Storm Sewersheds
3. Determine Existing Pollutant Loads
4. Identify Potential BMPs
5. Desktop Review/ Field Investigations for Site Suitability
6. Propose BMPs/ Quantify Pollutant Load Reductions
7. Finalize Report
8. Public Participation



Upper Makefield Pollutant Reduction Plan

- Jericho Creek in Upper Makefield is considered impaired by DEP for sediment.
- The Plan was approved by DEP in November 2024, and a project must be completed by 2029.



Next Steps

1. Apply for grant funding for a sediment reduction project.
2. Implement a restoration project on Jericho Creek.
3. Continue compliance with annual MS4 requirements.
4. Monitor requirements for next permit cycle.

For additional Information:

- <https://uppermakefield.org/preservation/stormwater-management/>



The goal is "Only Rain Down Your Drain"