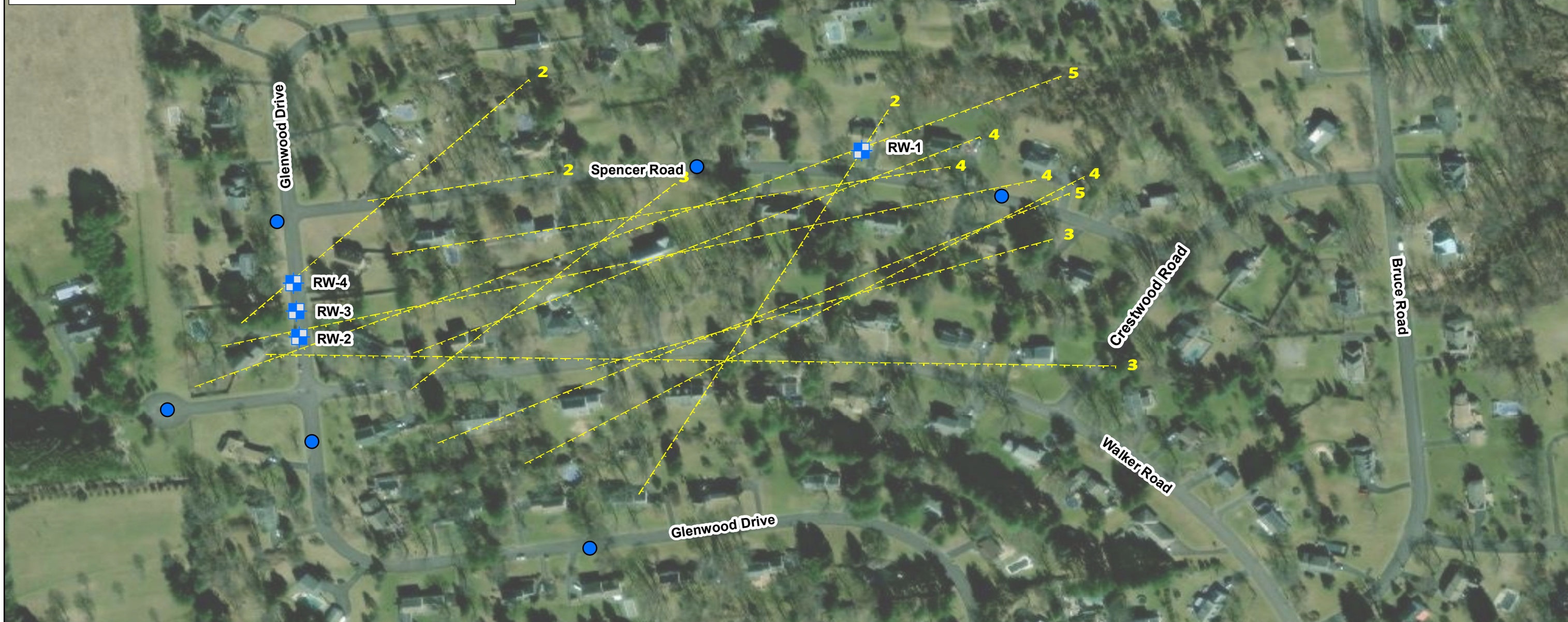


Legend

- Inferred Fracture Trace (from ERI) and Number of Constraining Anomalies
- Proposed Monitoring Wells
- Recovery Well

Proposed locations are tentative, based on current information, and the location of each monitoring well will be finalized as new information is obtained.



Notes:
The aerial photo was acquired through the Esri Imagery Web Service. Aerial photography dated 2024.
Inferred Fracture Traces were provided by RETTEW Field Services, Inc.
WSW Sample Locations and Detection of VOCs above MSCs were provided by Groundwater & Environmental Services, Inc.

verdantas

DISCLAIMER:
Verdantas LLC has furnished this map to the Client for its sole and exclusive use as a preliminary planning and screening tool. This map is reproduced from geospatial information compiled from third-party sources which may change over time and are not accurate as to mapping, surveying or engineering standards. Verdantas LLC makes no representation or warranty as to the content, accuracy, timeliness or completeness of any information. In no event will Verdantas LLC, its owners, officers, employees or agents, be liable for damages of any kind arising out of the use of this map by Client or any other party.

June 2025

Twin Oaks – Newark 14" Diameter Pipeline-
LNAPL Incident: Site Characterization Work Plan

Proposed Monitoring Wells

Upper Makefield Township
Bucks County, Pennsylvania